

AUTHENTICATED LICENSE PLATES



COUNTY AND CITY PLATES

These plates were not issued by the State of Florida and cannot be authenticated.



1912 - 1913, Alachua Co.



1911 - 1915, Jacksonville



1912 - 1913, Volusia Co.



1913 - 1914, Volusia Co.



1914, Hillsborough Co.



1915 - 1916, Volusia Co.



1916, Alachua Co.



1916, Dade Co.



1916, Osceola Co.



1916, Seminole Co.



1917, Alachua Co.



1917, Hillsborough Co.



1917, Palm Beach Co.



1917, Polk Co.



1917, St. Lucie Co.



Tampa



1917, Volusia Co.



1917, Walton Co.



1918-1939 FLORIDA PLATES



1918, white on black, flat



1919, black on orange



1920, red on gray



1921, white on brown



1922, white on green (2)



1923, orange on dark blue



1924, white on black (2)



1925, orange on green (2)



1926, yellow on black



1927, white on black



1928, yellow on maroon



1929, yellow on blue (2)



1930, white on green



1931, white on maroon



1932, orange on black



1933, black on orange



1934 white on black with ...



... black on white lock strip



1935, black on yellow with black on yellow lock strip



1936, white on red



1937, white on green



1938, yellow on black



1939, red on white

County code/prefixes were introduced in 1938.



1940-1959 FLORIDA PLATES



1940, white on black



1941, red on white



1942, orange on blue



1942, orange on blue and 1943 yellow on blue tab



1944, black on yellow



1945, yellow on black



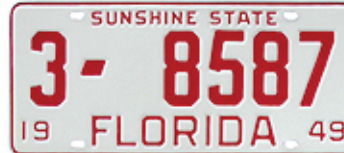
1946, white on dark blue



1947, white on green



1948, yellow on black



1949, red on white



1950, blue on orange



1951, green on yellow



1952, orange on blue



1953, blue on orange



1954, orange on blue



1955, blue on orange



1956, white on blue



1957, blue on white



1958, white on dark green



1959, dark green on white



1960-1974 FLORIDA PLATES



1960, yellow on blue



1961, dark blue on yellow



1962, blue on white



1963, white on blue



1964, blue on orange



1965, yellow on red



1966, white on blue



1967-1968, white on black



1968-1969, white on red



1969-1970, white on green



1970-1971, white on blue



1972, red on white



1973, green on white



1974, red on white

AUTHENTICATION PROCESS

Pursuant to Florida Statute 320.086, authenticated license plates may be issued to any vehicle manufactured in 1974 or earlier and currently titled in the State of Florida. The license plate must be the same year as the model year of the car or truck. Authenticated license plates may only be issued to cars, motorcycles, and pickups weighing 5,000 pounds or less.

The license plate will be approved for issuance if it passes inspection and is still legible for law enforcement purposes. A county code or prefix does not have to match the residential county of the applicant.

The documentation listed below must be submitted by the applicant to the tax collector for review.

- The vehicle first must be titled in Florida in the name of the applicant
- A Florida license plate matching the year of manufacture of the vehicle
- A completed Request for Authentication
- Registration Fees (Usually \$30-\$60. Tax collector personnel will inform you of the exact fee upon approval.)

Instructions:

Drop off your authenticated license plate to a tax collector office with your completed Request for Authentication form. Be sure to write your name, email address, and a daytime phone number on the form. Tax collector personnel will contact you during business hours once the license plate has been reviewed.

Important Information:

Government license plates will not be approved for use.

Special use license plates (example: Seminole Indian, Amateur Radio, etc.) may require additional documentation and may or may not be authorized.

Any license plates mailed or shipped must be sent by a trackable method. The tax collector is not responsible for lost in transit plates, damaged plates, or plates left at a different branch or drop boxes.



Plate Types

B	Private Trailer
BB	Private Trailer
C	City Bus
CV	Commercial Vehicle
D	Passenger < 2500 lbs.
E	Limousine/Bus for Hire
FHP	Florida Highway Patrol*
FO	Half-year trailer for hire >4001 lbs.
G	Commercial <2050 lbs.
GF	Truck for hire, full-year
GH	Commercial 2051-3050 lbs.
GK	Commercial 3051-5050 lbs.
GL	Commercial >5050 lbs.
GW	Heavy Equipment
HF	Truck for hire >4051 lbs.
HP	Handicapped
K	Ambulance
L	Semi-trailer
MC	Member of Congress*
MH	Mobile Home
N	Rental Trailer
NN	Rental Trailer
O	Semi-trailer for hire
P	Off-road Vehicle/Harvest Truck
Q	Antique/Historic Vehicle
RV	Recreational Vehicle
S	Bus for Hire
SRD	State Road Department*
T	Passenger
TA-TE	Truck Tractor
TAF-TEF	Half-year Truck Tractor
V	Private trailer <500 lbs.
W	Passenger 3500-4500 lbs.
WW	Passenger > 4500 lbs.
X	Tax Exempt

**Government-owned and Legislative License Plates Cannot Be Authenticated for Use*



County Codes

- | | | |
|-----------------|------------------|----------------|
| 1. Dade | 24. St. Lucie | 47. Citrus |
| 2. Duval | 25. Jackson | 48. Clay |
| 3. Hillsborough | 26. Osceola | 49. Hendry |
| 4. Pinellas | 27. Highlands | 50. Washington |
| 5. Polk | 28. Pasco | 51. Holmes |
| 6. Palm Beach | 29. Columbia | 52. Baker |
| 7. Orange | 30. Hardee | 53. Charlotte |
| 8. Volusia | 31. Suwannee | 54. Dixie |
| 9. Escambia | 32. Indian River | 55. Gilchrist |
| 10. Broward | 33. Santa Rosa | 56. Hamilton |
| 11. Alachua | 34. De Soto | 57. Okeechobee |
| 12. Lake | 35. Madison | 58. Calhoun |
| 13. Leon | 36. Walton | 59. Franklin |
| 14. Marion | 37. Taylor | 60. Glades |
| 15. Manatee | 38. Monroe | 61. Flagler |
| 16. Sarasota | 39. Levy | 62. Lafayette |
| 17. Seminole | 40. Hernando | 63. Union |
| 18. Lee | 41. Nassau | 64. Collier |
| 19. Brevard | 42. Martin | 65. Wakulla |
| 20. St. Johns | 43. Okaloosa | 66. Gulf |
| 21. Gadsden | 44. Sumter | 67. Liberty |
| 22. Putnam | 45. Bradford | 68. State H/Q |
| 23. Bay | 46. Jefferson | 90. Dup H/Q |

County code/prefixes were introduced in 1938.





Vickie Potts – Charlotte County Tax Collector

18500 Murdock Cir | Port Charlotte, FL 33948
taxcollector.charlottecountyfl.gov | 941-743-1350

Request for Authentication of Florida License Plate

APPLICANT

Name: _____

Address: _____
Street Address City State Zip

Driver License No.: _____ Daytime Phone No.: _____

AUTHENTICATED PLATE DESCRIPTION (1974 or older)

Florida Plate Number: _____ Year of Florida Plate: _____

VEHICLE DESCRIPTION (plate and vehicle must be same year)

Vehicle Year: _____ Make: _____ Body: _____

Vehicle Identification No.: _____ Current FL Title No.: _____

I hereby make an application for the issuance of the enclosed physical Florida license plate to the above-described vehicle. The physical plate is being submitted for inspection and approval.

Under penalty of perjury, I declare I have read the foregoing document and the facts stated in it are true.

Signature of Applicant

Step 1 Complete, print, and sign application.

Step 2 Hand deliver license plate and application to your local tax collector's office.

Step 3 Allow at least five business days for inspection and approval. We will contact you during business hours for payment.

The tax collector is not responsible for lost in transit plates, damaged plates, or plates left at a different branch or in drop boxes.